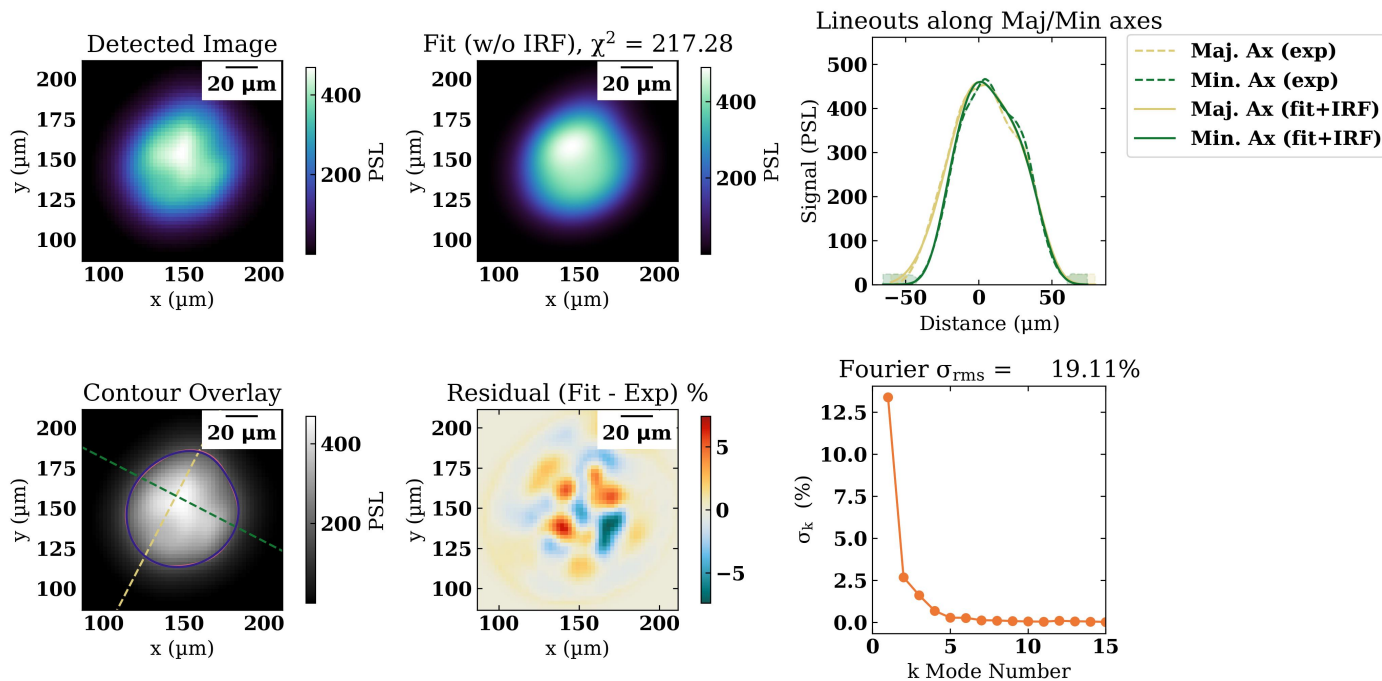


Results

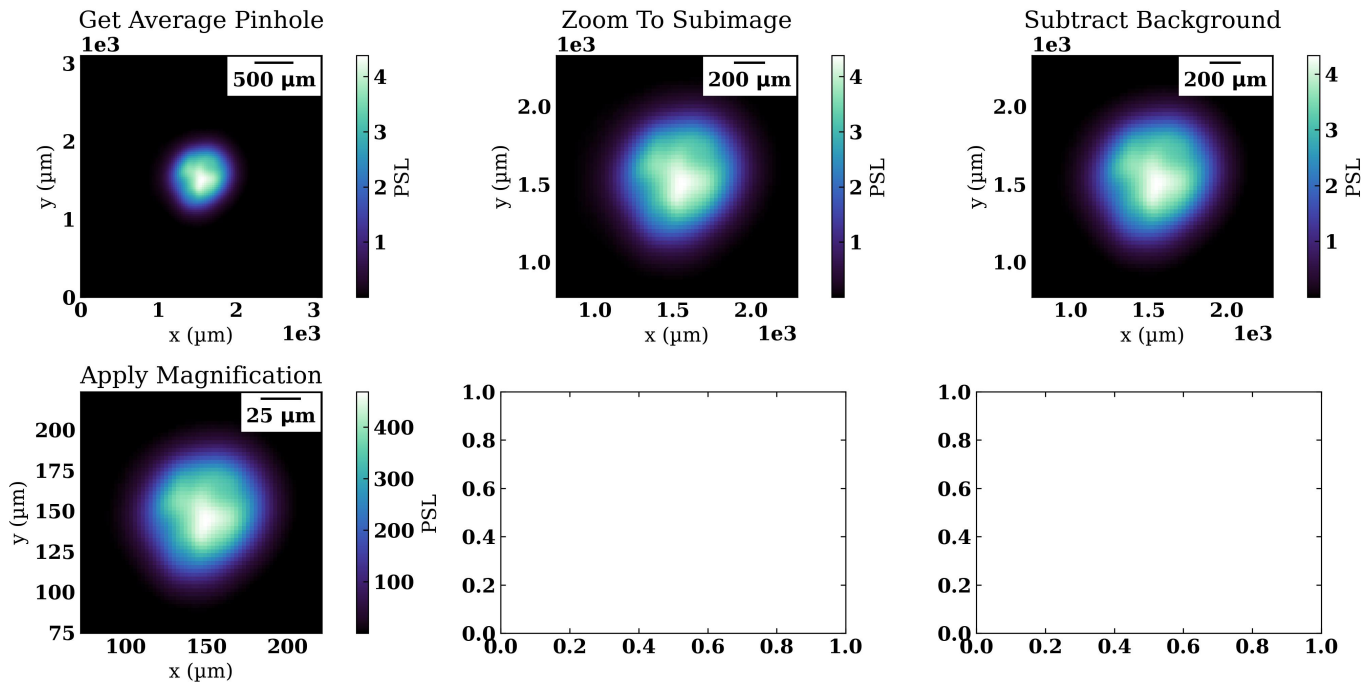
Parameter	Channel 1
Fit Metric	217
Amplitude	490 ± 0.155 PSL
Axial Ratio	1.12 ± 0.000242
Core Offset	9.89 ± 0.00613
L1 Angle	-1.16 ± 0.000326
L2 Angle	-2.05 ± 0.00168 rad
Major Axis	35.6 ± 0.00522 μm
Minor Axis	31.7 ± 0.00727 μm
Photon Yield	1.13e+04 ± 19.3 J
R0	34.1 ± 0.00437 μm
R17	40.9 ± 0.00302 μm
Supergaussian Exponent	5.63 ± 0.0146
X Center	145 ± 2.84e-14 μm
Y Center	158 ± 0.0061 μm

TRXI IP 1 SG Fit

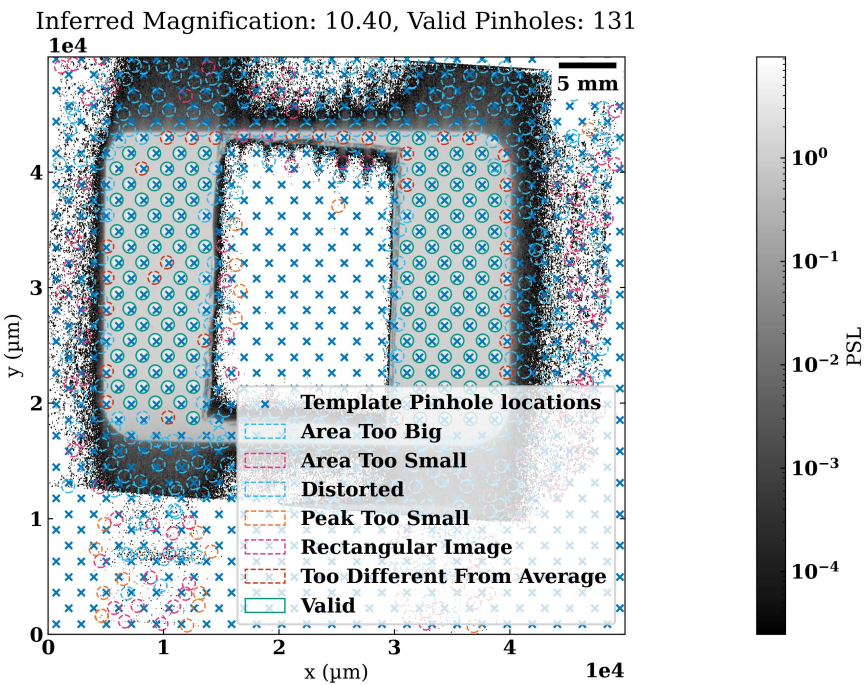


TRXI IP 1

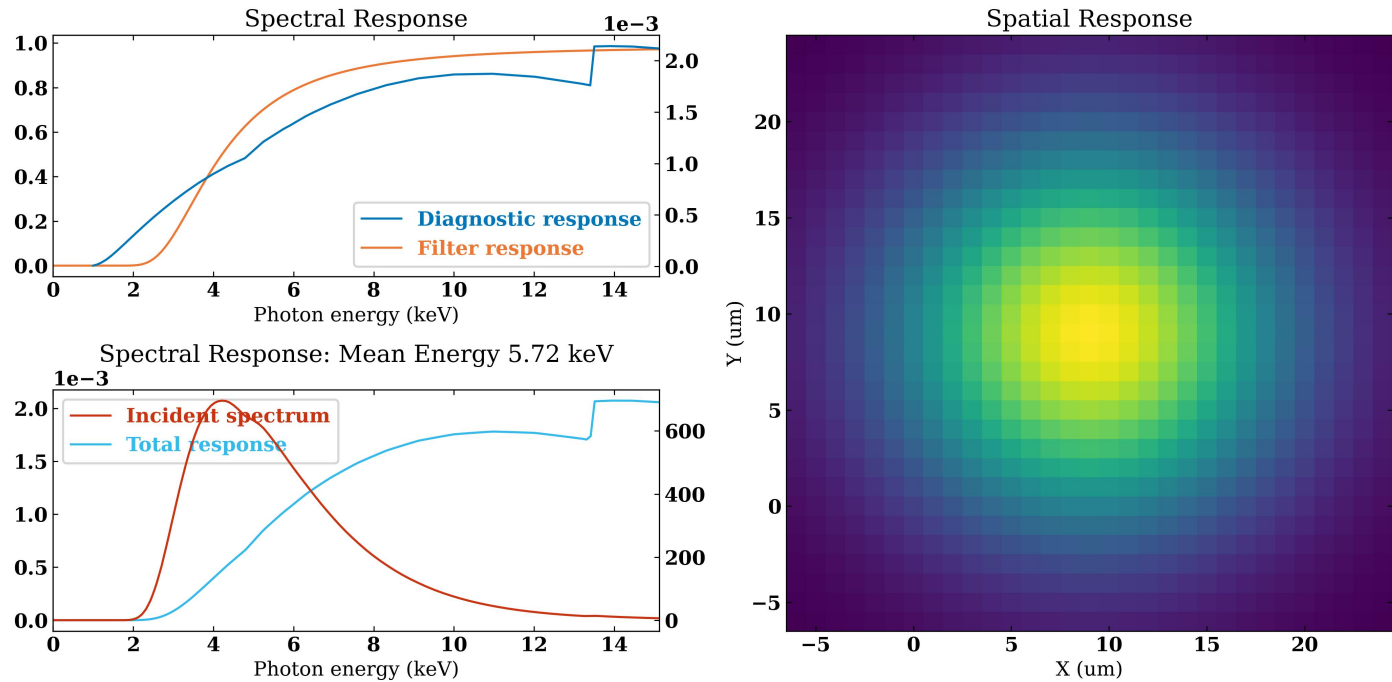
TRXI IP 1 Processing



TRXI IP 1 Pinhole Locator Report



TRXI IP 1 Response Functions



TRXI IP 1 Fresnel Diffraction

Fresnel Diffraction for $D = 5\text{ }\mu\text{m}$, $M = 10.40$, $R = 166\text{ mm}$

